



**Our Catchments,
Our Communities**



Traditional Owners Acknowledgement

We acknowledge and respect Victorian Traditional Owners as the original custodians of Victoria's land and waters, their unique ability to care for Country and deep spiritual connection to it. We honour Elders past and present whose knowledge and wisdom has ensured the continuation of culture and traditional practices.

We are committed to genuinely partner, and meaningfully engage, with Victoria's Traditional Owners and Aboriginal communities to support the protection of Country, the maintenance of spiritual and cultural practices and their broader aspirations in the 21st century and beyond.

Mirring explanation

The design of this document includes the application of the Mirring visual. Mirring is a commissioned piece created by artist Thomas Day, a Gunditjmara, Yorta Yorta and Wemba Wemba man. It represents the diverse Countries and landscapes across Victoria and the 'scars that have been left within the landscape by our people' while at the same time reminding us of 'our inherent responsibility to protect Country'.

The artwork was created in collaboration with Aboriginal staff to better understand to work that the Department of Environment, Land, Water and Planning does and the values our staff hold. It acknowledges Aboriginal values and cultural identity and respects their importance for integrated catchment management.

Minister's Foreword



Victoria has a long and successful history of partnering with community to care for our catchment health in a way that benefits our environment, our community, and our economy.

Integrated Catchment Management is a partnership between the Victorian Government, Catchment Management Authorities, and communities to jointly manage catchments in a way that benefits everyone. It seeks to provide healthy, sustainable, and productive land, water and biodiversity maintained through strong community partnerships.

Our communities, and the partnerships we have with these communities, are why we have been so successful in delivering the first integrated catchment management strategy for Victoria *Our Catchments, Our Communities (2016-2019)*.

This strategic direction statement, *Our Catchments, Our Communities: Building on the legacy for better stewardship* focuses on coordinated regional strategy, planning to care for catchments, and builds on the *Our Catchments, Our Communities* strategy, which laid the foundations for our current Integrated Catchment Management approach.

The on-ground projects supported by *Our Catchments, Our Communities* and delivered in regional communities through strong community partnerships have provided many benefits for our catchments and their waterways. A record 175 partnerships have improved the health and resilience of Victoria's catchments, including undertaking 109,631 hectares of works. More than 21,600 people have been engaged in field days, workshops, meetings and training with significant level of partnering with Traditional Owners to protect cultural heritage, and increase awareness of Aboriginal values and aspirations. And every dollar invested in regional projects delivered as part of *Our Catchments, Our Communities* has leveraged \$1.28 in partner cash and in-kind investment.

The Government is committed to continuing this partnership with community and is providing \$21.75 million over four years, to improve the holistic management of land, water, and biodiversity of our catchments.

I look forward to the continued emphasis on regional community priorities to support healthy, productive, resilient, and liveable catchments across Victoria over the next three years.

A handwritten signature in blue ink that reads "Richard Wynne". The signature is fluid and cursive, written in a professional style.

Minister for Water
Richard Wynne MP

Why Integrated Catchment Management works

Integrated Catchment Management (ICM) recognises that water, land, biodiversity, coasts and marine environments are parts of connected systems.

The use and management of one part of a system will impact on other parts, so it is important to consider catchments holistically and recognise that management is place-based. How we plan, invest and act to restore and manage our catchments allows positive outcomes to be delivered across different environments in an integrated way. This integrated approach to catchment management builds capacity for better stewardship and contributes to greater system resilience.

In Victoria, our experience shows that ICM is best delivered regionally and locally through a place-based approach that is collaborative and coordinated effectively by catchment management authorities (CMAs).

Each of the 10 CMAs develops a regional catchment strategy (RCS) in partnership with its communities to set the direction on how each catchment region is managed.

On-ground work is supported by robust planning, comprehensive engagement and innovation. ICM is flexible in both scope and in the types of interventions, and is based on strong partnerships and collaboration. It supports the development of innovative approaches to how we work and act together to support resilient regions and healthy communities.

ICM projects have also leveraged investment from a range of sources, including private industry and the other governments, to deliver agreed priorities for each region, and additional benefit derived from the participation and commitment of partners and communities.

The framework for ICM includes key policy directions for water, land and biodiversity and how catchment management partners and communities work together in a collaborative way in each region. Figure 1 presents the contemporary ICM framework for Victoria.



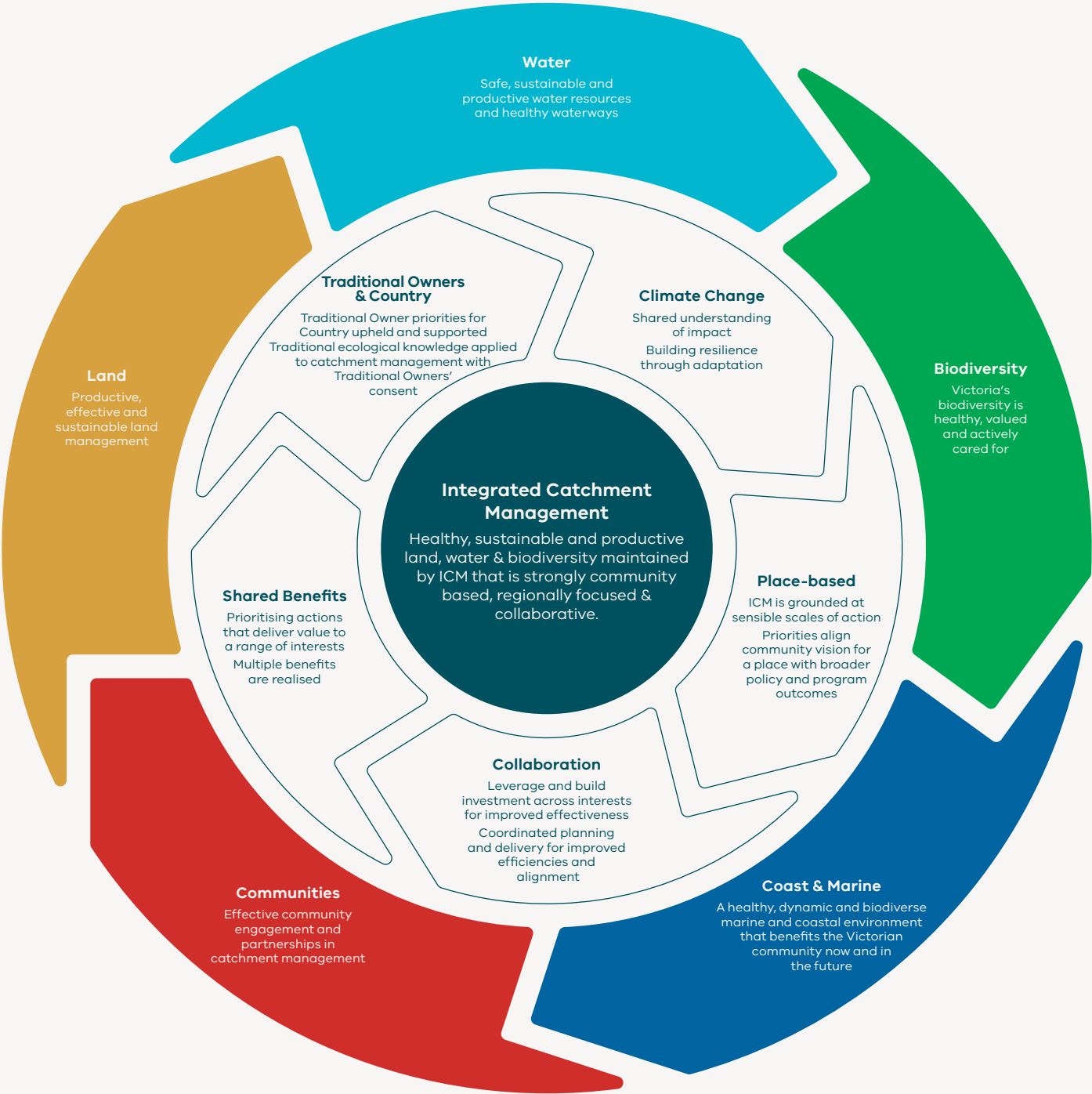


Figure 1. The ICM Framework in Victoria.

Regional Catchment Strategies

CMAs will develop 10 new RCS with partners including Traditional Owners, local government, landholders and communities.

RCS are the cornerstones of an integrated approach to regional natural resource management (NRM) planning and action.

RCS embrace community values and build priorities for NRM in an integrated approach set at the catchment level.

They provide a unique framework that describes these values and priorities as part of state and federal NRM legislation, policies and programs.

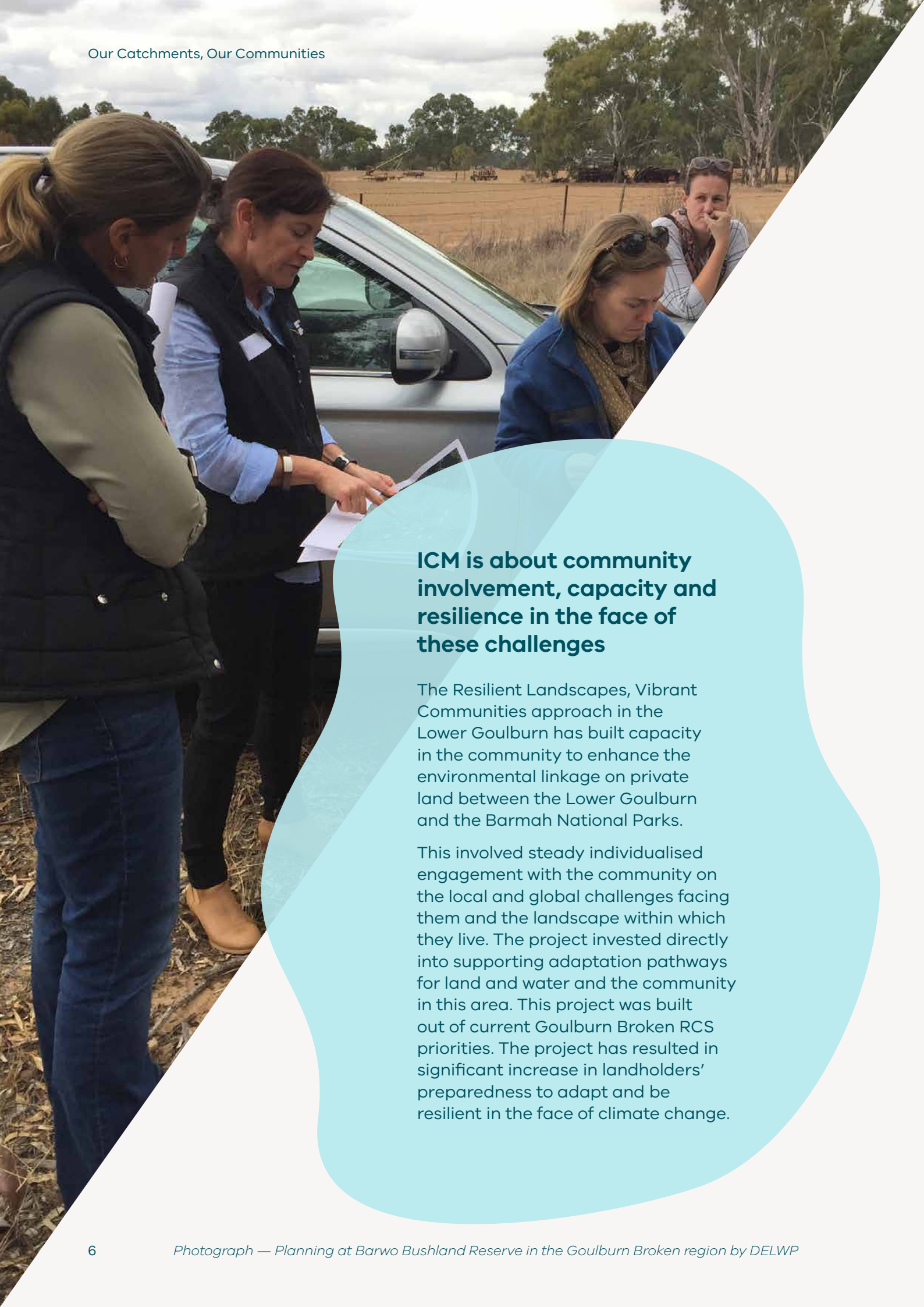
They are place-based, setting strategic directions for ICM and how it will be delivered with partners and communities.



ICM provides for innovative partnerships and management approaches, with flexibility to build strong foundations.

The Wimmera project – Enhancing the health and liveability of the Wimmera River enabled the Wimmera CMA to spend a significant amount of time building foundations with local government, Traditional Owners and the community (Apex Club) to revitalise a section of the Wimmera River and its surrounds. The project, planned and developed over several years, now includes a full loop walking track near Horsham with environmental and Traditional Owner interpretation, traditional plantings and a new canoe launch providing better access to the river.

The Perry Catchment project – Protecting our ponds allowed time and resources to develop a lasting relationship with Hancocks Victoria Plantations, to manage and maintain the once common, but now rare, 'chain of ponds' river system for the future. The major forestry group was keen to improve environmental stewardship of its properties in the catchment. As a result of longer lead times and flexible co-investment, the company has been able to work with the West Gippsland CMA and partners to improve environmental planning, address on site roading practices along the ponds and provide permanent protection by placing Trust For Nature covenants on its property.



ICM is about community involvement, capacity and resilience in the face of these challenges

The Resilient Landscapes, Vibrant Communities approach in the Lower Goulburn has built capacity in the community to enhance the environmental linkage on private land between the Lower Goulburn and the Barmah National Parks.

This involved steady individualised engagement with the community on the local and global challenges facing them and the landscape within which they live. The project invested directly into supporting adaptation pathways for land and water and the community in this area. This project was built out of current Goulburn Broken RCS priorities. The project has resulted in significant increase in landholders' preparedness to adapt and be resilient in the face of climate change.

Community and partner focus

Central to ICM is a close connection to places that are important for communities, reflecting local values and priorities. Strong, targeted engagement and community participation allows informed decisions that consider different perspectives and the development of shared objectives for the environmental health of these significant places.

ICM brings together people and organisations as partners to identify and respond to regional challenges that cannot be solved by one stakeholder alone.

In protecting and enhancing the natural, cultural, recreational, and economic values of our catchments, ICM involves many partners - Traditional Owner corporations, Aboriginal groups, community groups and private landowners and managers in setting strategic directions and in the planning and delivery of projects.

An approach to respond to ongoing challenges

ICM provides efficiency through integration, builds capacity for innovation, and flexibility to respond to key ongoing challenges at the local level that impact on catchment health, including:

- changing land use and management practices;
- declining condition of natural resources;
- population and demographic change;
- climate change impacts and significant events;
- stewardship of our natural resources; and
- limited availability, demands and uses of information.

A legacy of achievements in the first four years

The on-ground component of the investment in the first four years under *Our Catchments, Our Communities* has strengthened and fostered best practice ICM and the benefits it provides. A further investment of \$21.75 million from 2021 to 2024 will support ICM partners to build on the legacy of the following achievements in the first four years:

Delivering local and regional community priorities

Investment into the purchase of Walker Swamp is an innovative approach that has responded to community concerns and needs reflected in the Glenelg Hopkins RCS. The purchase and new management regime, with landholders providing ongoing integrated land, water and biodiversity management to protect and improve critically endangered wetlands, has seen the return of abundant flora and fauna.

Improving water supplies for regional communities

A partnership between North Central CMA and Coliban Water is improving the quality of drinking water in three main water storages. On-ground catchment works with private landholders is a new approach to offset costly water treatment infrastructure while helping to build environmental and social value.

Protecting cultural heritage values

In partnership with Traditional Owners, landholders on the Red Gum Plains in East Gippsland are increasing their awareness of Gunaikurnai cultural heritage when undertaking on-ground works and working together to preserve and manage the land, wetlands and biodiversity across the agricultural landscape.

Contributing to regional economic growth while protecting environmental values

Enabling tourism access to Lake Tyrell, while managing and minimising environmental impacts, is part of a broader approach to improve habitats in the Avoca Basin and its terminal lakes in the Mallee region. The Wimmera River is improving due to restoration works that are also supporting recreation access and minimising its impacts. Monitoring and planning for climate change impacts is supporting resilience of agricultural enterprises in the Goulburn Broken region.

Increasing participation of Traditional Owners to support their aspirations

All Registered Aboriginal Parties have been engaged by CMA, with 22 Traditional Owners and Aboriginal groups involved in projects to date. Approximately 3 per cent of *Our Catchments, Our Communities* funding was invested into Victorian Aboriginal groups, which exceeds the Government's procurement target of 1 per cent.

Investing in innovative partnerships and management approaches

Partnerships have been developed with those not traditionally involved in protecting natural resources. West Gippsland's Perry River catchment is being restored and protected on public and private land with the private forestry industry and landowners.



ICM Partnerships with Traditional Owners

ICM strengthens partnerships and creates more efficient, mutual and respectful relationships. Partnership arrangements between Traditional Owner Corporations, CMA, landholders and the broader community have been fostered and enhanced through ICM. These partnership arrangements support works on Country to improve landscapes.

Through these partnerships, the *Our Catchments, Our Communities* program is enabling Traditional Owners to care for Country and engage the broader community in ICM projects. Elders are transferring knowledge about important places to young people in land management teams, building self-awareness, confidence and pride in their identity through delivery of projects on Country.

Traditional Owners have been able to promote and build their culture and associated businesses, with their teams gaining more insight into restoration works being done across Country. Awareness of cultural heritage values has increased, and additional potential sites of significance identified across Victoria. There has also been improved understanding about traditional ecological knowledge as well as the science behind the work.

The next phase of ICM will build on the successes of Aboriginal inclusion and partnerships with Traditional Owners. Where it can contribute, ICM will support aspirations for Aboriginal self-determination.

Achievements from collaboration

This collaborative model has achieved many outputs through directly investing in catchment management and leveraging co-investment through partnerships and engagement with community, including the establishment and maintenance of:

16,000,000

dollars in Our Catchments, Our Communities on-ground investment

104

terrestrial features including nest boxes and natural ground features

20,081,554

dollars in leverage

156.27

kilometres of fencing and bollards

55

visitor facilities including recreational, operations and buildings

1,188.40

hectares of native indigenous vegetation

16.7

kilometres of roads and trails

11,123.76

hectares of woody and non-woody weed control

12

stock troughs

117,112.30

hectares of pest animal control

14

waterway structures including rock chutes, flow regulators, and water pumps

7.67

hectares of earth works including levelling and armouring

244.06

hectares of rubbish removal

1,069.43

hectares of grazing
regime change

5,694

hectares of agricultural
practice change

16

ML of water delivered

136.85

hectares of ecological fire
regime implementation

53

approvals and advice
provided including permits

193

management agreements
– perpetual and non-perpetual

466

assessments made

21,672

participants at
engagement events

735

partnerships

138

plans

425

publications including
written, visual and audio

5

information management
systems

Focus on stewardship

Investment priorities (2021 to 2024 - \$21.75 million) will build better catchment stewardship with regional and local communities, Traditional Owners and key sector partners based on the solid foundations of the last four years of ICM investment.

Our vision for *Our Catchments, Our Communities* remains:

Healthy, sustainable and productive land, water and biodiversity maintained through Integrated Catchment Management that is strongly community-based, regionally-focused and collaborative.

We are building on the legacy of the *Our Catchments, Our Communities* strategy by focusing on coordinated regional strategy and planning, improved partnerships and the delivery of **better catchment stewardship** through improved leadership, agency and community capacity and the demonstration of effective action. Further developing catchment stewardship is essential for this

phase of ICM to foster greater shared direction and responsibility in the way we manage our natural resources.

Reviewing strategic directions for ICM and strengthening our approach regionally is timely, with RCS scheduled for renewal. Bringing together policies and priorities at national, state and local scales is reflected in our planning processes.

Creative and innovative approaches to ICM enables landscape scale on-ground projects. A systems-focus embraces water, land and biodiversity to deliver multiple outcomes across environmental, economic, cultural and social values.

Collaboration and working together remain a foundation for achieving outcomes efficiently and to leverage contributions from different sources. Building capacity and resilience is important more than ever with the challenges of climate change and impacts of significant events.

What is Catchment Stewardship?

Catchment stewardship is the management of land, water and biodiversity across the catchment that provides additional public benefit (environmental, economic, cultural and social value), going beyond basic duty of care through best practice management.

Catchment stewards are people who leave natural resources in a better condition than their current state.

Good stewardship uses strong private and public sector, Traditional Owner, and community partnerships to plan, coordinate and deliver valuable action on the ground.

Partnerships remain an important tool for collaboration and integration. Building on our partnerships with Traditional Owners provides an opportunity for ICM to support how we can contribute to enabling Aboriginal self-determination in the way we plan and deliver ICM.

The model adopted under *Our Catchments, Our Communities* for on-ground delivery has been supported and embraced by partners and communities. It offers time to engage, plan and align objectives for projects, allows flexibility to meet community needs and foster innovation, and multiple year project funding can be accommodated when required. These remain core principles for the next phase of ICM on-ground delivery across Victoria.



What we are going to do 2020/2021	What we will achieve 2024	The long term outcome
<p>Planning Regional Catchment Strategies</p> <ul style="list-style-type: none"> • 10 new RCS <p>Investment & Delivery Delivering Catchment Stewardship</p> <ul style="list-style-type: none"> • On-ground landscape scale projects • Delivering environmental, cultural, social and economic outcomes <p>Partnerships Partnerships & Agreements</p> <ul style="list-style-type: none"> • Implementation of Catchment Partnership Agreements • Partnerships with Traditional Owners • Enabling catchment stewardship with the community 	<p>Improve place-based catchment stewardship delivered through strategic regional ICM planning, coordinated on-ground implementation, effective partnerships and community capacity</p>	<p>Active stewardship to improve catchment health and resilience</p>
<p>MERI Framework Demonstrating good catchment stewardship</p>		

Figure 2. ICM Program.



Strategic direction going forward

The three-year ICM program will support our long-term outcome of active catchment stewardship to improve catchment health and resilience. Figure 2 identifies the key program components where effort will be focused.

The objectives are:

- **RCS set strategic directions.** Renewed RCS will contain a consistent set of ICM outcomes across the 10 CMA regions. They will align catchment priorities of local and regional communities to key policy and programs developed by the Victorian Government and incorporate Aboriginal cultural values and traditional ecological knowledge.
- **Delivery of better stewardship.** Place-based on-ground catchment stewardship projects deliver water, biodiversity, land health and productivity benefits for regional and local communities and Traditional Owners. The delivery of cultural, social and economic outcomes will be aligned to regional priorities. Recovery from extreme events or improving environmental resilience will also be supported.
- **Effective partnerships and improved capacity.** Implementation of catchment partnership agreements will continue to strengthen existing arrangements at the regional level. Partnerships with Traditional Owners will support involvement in planning and decision-making. Partnerships will support RCS development and implementation through strengthened participation. They will enable the stewardship of our catchments and contribute to building the capacity of regional communities.

Our priorities to support the outcome are:

- **Priority 1.** Develop 10 new regional catchment strategies.
- **Priority 2.** Align ICM with Traditional Owners' aspirations for Country.
- **Priority 3.** Work with and invest in communities to develop and deliver landscape scale catchment stewardship projects.
- **Priority 4.** Build the capacity of NRM communities – stewardship, adaptation to climate change impacts, recovery from extreme events.
- **Priority 5.** Partner to improve coordination and collaboration between NRM agencies at state, regional and local levels.
- **Priority 6.** Develop a robust framework to strengthen catchment stewardship, and measure the impact of ICM on environmental, social and economic values aligned to national and international approaches.
- **Priority 7.** Improve alignment and consistency of state, regional and local NRM outcomes.
- **Priority 8.** Improve consistency, availability and management of NRM information.



*Photograph — West Gippsland – Aerial view of the Chain of Ponds after fencing installation.
Perry River Catchment*

Supplement

Our Catchments, Our Communities Projects 2016-2019

Recent ICM projects have secured co-investment to achieve environmental, cultural, social and economic results that are important to the communities they serve. The Victorian Government is continuing co-investment in place-based ICM projects that reflect communities' objectives set out in RCS, and will build on the legacy of these 2016-2019 projects.



Mallee CMA

- 01 The Tyrrell Project: Ancient Landscapes, New Connections

Wimmera CMA

- 02 Enhancing the Health, Environment and Liveability of the Wimmera River

Glenelg Hopkins CMA

- 03 Wetlands of the Greater Grampians

North Central CMA

- 04 Land, Water and Fire — Healthy Country Plan for the Boort, Lyndger, Kinypanial System
- 05 Community Delivered ICM Projects
- 06 Upper Coliban Integrated Catchment Management Plan Implementation

Corangamite CMA

- 07 Connected Landscapes: Adapting Corangamite's Natural Assets to Climate Change
- 08 Protecting the Environment via On-Farm Water Efficiency
- 09 Sustainable Dairy Management

Goulburn Broken CMA

- 10 Resilient Landscapes Vibrant Communities: Linking Lower Goulburn
- 11 Resilient Landscapes Vibrant Communities: Bogies and Beyond

Port Philip & Westernport CMA

- 12 Restoring the Natural Glory of Jacksons Creek
- 13 Transforming the Dandenong Creek Corridor into a World Class Urban Link
- 14 Greens Bush to Arthurs Seat Biolink

North East CMA

- 15 Keeping Productive Landscapes Resilient in the Lower Ovens
- 16 Building Resilient Environmental and Social Networks in the Upper Mitta Mitta

West Gippsland CMA

- 17 Protecting Our Ponds

East Gippsland CMA

- 18 Implementing the Regional Catchment Strategy on the Red Gum Plains
- 19 Implementing the Regional Catchment Strategy in the Tambo Valley



Mallee CMA

Project	01. The Tyrrell Project: Ancient Landscapes, New Connections
Benefits & Outcomes	Habitats within the Avoca Basin agricultural landscapes are being improved and recreation access managed to minimise impacts on the environment including at Lake Tyrrell. The fully integrated project is celebrating Aboriginal culture, sharing stories of the environment while protecting it.
Key achievements	<ul style="list-style-type: none"> • 13 recreation visitor facilities, 2.9 km track, 36 km fencing • 128 ha revegetation, 3,965 ha weed control, 5,903 ha pest animal control • 30 nest boxes Uttiwillock wetland • Revegetation and pest plant and animal control at Lake Tchum South • 4 picnic tables and 3 chairs on walkways at Green Lake • Engaged 844 people in field days, meetings, training and workshops
Our Catchments, Our Communities investment	\$1.6 million
Leverage	\$2.5 million investment / in-kind

Wimmera CMA

Project	02. Enhancing the Health, Environment and Liveability of the Wimmera River
Benefits & Outcomes	The health and liveability of the Wimmera River is improving due to restoration works, improved recreation access minimising impacts on the environment, and protection of cultural heritage in partnership with Traditional Owners. New partnerships and engagement with groups the Wimmera CMA hasn't worked with in the past. Local government investment in new plans and proposals to further enhance the Wimmera River and surrounds.
Key achievements	<ul style="list-style-type: none"> • 120 m of floating wetlands in the Dimboola Weir pool to address bank erosion from skiing and protect culturally sensitive areas • 40 ha of riparian frontage managed and enhanced for environmental, social and recreational uses • Reengagement of Langland's Anabranche in the Horsham Weir Pool • 2 km of private river frontage opened/restored for public access • 6 recreation visitor facilities, 4 km trails, 7.8 km access roads • 10 waterway structures, 4.6 km fencing, 22 ha revegetation • 43 ha pest plant and animal control • Engaged 93 people in field days and meetings • Partners and stakeholders engaged through the Wimmera NRM forums
Our Catchments, Our Communities investment	\$1.6 million
Leverage	\$700,000 of investment

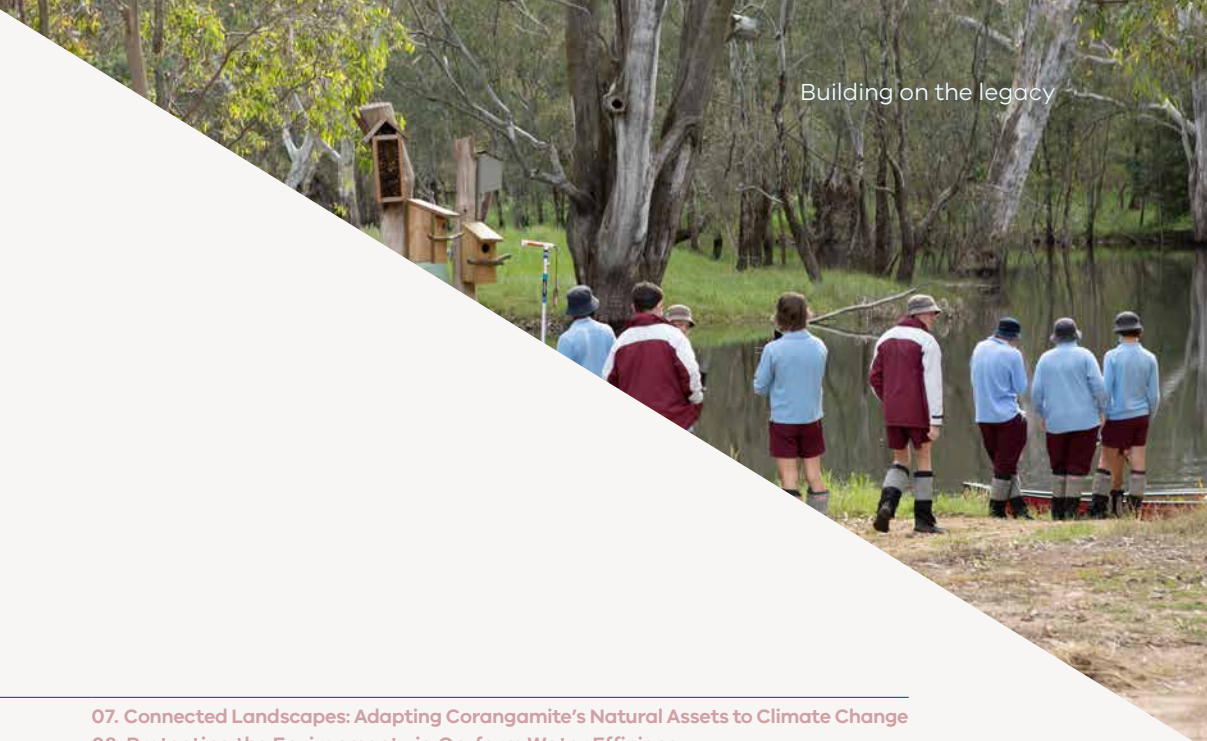


Glenelg Hopkins CMA

Project	03. Wetlands of the Greater Grampians
Benefits & Outcomes	Critically endangered wetland protected through the Walker Swamp Reserve purchase and improved management on adjoining private land. Walker and Green Swamps and their catchment managed by Nature Glenelg. Trust for Nature covenanting underway to permanently protect 114 ha of shallow freshwater marsh and 135 ha of aquatic herblands.
Key achievements	<ul style="list-style-type: none"> • Protection and hydrological restoration of Walker Swamp • Improved management of 12 wetlands totalling 374 ha in partnership with eight landholders • 732 ha weed control, 98,764 ha pest animal control • Improved grazing practices on 752 ha • 25 management agreements in place • 26 partnerships established • 1,848 people engaged in field or training days, workshops and meetings
Our Catchments, Our Communities investment	\$1.6 million
Leverage	\$851,426

North Central CMA

Project	04. Land, Water and Fire: Healthy Country Plan for Boort, Lyndger, Kinypanial System 05. Community Delivered ICM Project 06. Upper Coliban Integrated Catchment Management Plan
Benefits & Outcomes	Three place-based ICM approaches with diverse partnerships delivering community catchment priorities and water services. Environmental improvements, water quality and quantity benefits implemented through the Integrated Upper Coliban Catchment Plan. Landscape restoration model with Landcare delivering large projects and building community capacity. Cultural practices on Country strengthened through support to Dja Dja Wurrung for Country Planning.
Key achievements	<ul style="list-style-type: none"> • 11,955 ha of catchment stewardship • Investment into development and implementation of a catchment plan • 711 ha of revegetation • 686 ha weed control, 10,545 ha pest animal control • 18 km of fencing to protect water quality and environmental values • 99 ha of improved grazing or agricultural practices • 9 management agreements in place • 180 participants at field days
Our Catchments, Our Communities investment	\$1.6 million
Leverage	\$1,922,000 leveraged including 1:1 funding to deliver the Upper Coliban ICM Plan



Corangamite CMA

Project	07. Connected Landscapes: Adapting Corangamite's Natural Assets to Climate Change 08. Protecting the Environment via On-farm Water Efficiency 09. Sustainable Dairy Management
Benefits & Outcomes	<p>Fifteen community groups and their partners collaborating to plan and manage the impacts of climate change across the Central Victorian Uplands and Victorian Volcanic Plains.</p> <p>Farm enterprises implementing modernised approaches and best practice for increased water efficiency and reduced offsite impacts in waterways.</p> <p>Whole of property nutrient management improving dairy industry catchment stewardship.</p>
Key achievements	<ul style="list-style-type: none"> • 33,000 ha of catchment stewardship across agricultural landscapes • Bunanyung Landscape Alliance formed with 15 NRM groups • Adaptation Pathways Plan for the Western District Lakes' and Bunanyung Landscape Plan • 5,608 ha of improved agricultural practices • 21 km fencing providing stock/pest animal exclusion and 245 ha remnant vegetation protection • 295 ha weed control, 118 ha pest animal control • 31 management agreements in place • 1,072 people in field or training days, workshops and meetings
Our Catchments, Our Communities investment	\$1.6 million
Leverage	\$305,050 direct investment from landholders

Goulburn Broken CMA

Project	10. Resilient Landscapes Vibrant communities: Linking Lower Goulburn 11. Resilient Landscapes Vibrant communities: Bogies and Beyond
Benefits & Outcomes	<p>Capacity of Yorta Yorta Traditional Owners to work on Country strengthened. Landscape connectivity being established between the Lower Goulburn and Barmah National Parks. Landowners engaged in habitat protection to connect vegetation across the Lower Goulburn landscape.</p> <p>Communities participating in citizen science in the Strathbogies to understand links between climate change, vegetation dieback and groundwater.</p>
Key achievements	<ul style="list-style-type: none"> • 1,172 ha of catchment stewardship • 351 ha of revegetation • 22 km of fencing • Improved grazing practices on 289 ha • 280 ha weed control, 252 ha pest animal control • 32 management agreements in place • 26 partnerships established • 790 people engaged in field days
Our Catchments, Our Communities investment	\$1.6 million
Leverage	\$609,404



Port Phillip & Westernport CMA

Project	<p>12. Restoring the Natural Glory of Jackson's Creek</p> <p>13. Transforming the Dandenong Creek Corridor into a World Class Urban Link</p> <p>14. Greens Bush to Arthurs Seat Biolink</p>
Benefits & Outcomes	<p>Three projects mitigating the impacts of clearing and development and enhancing waterways, biodiversity, cultural and recreational values in urbanised environments. Waterway corridors are being restored with revegetation linking habitat on private land. Significant community participation undertaking re-instatement works.</p>
Key achievements	<ul style="list-style-type: none"> • Awareness and increased protection of the culturally significant Bora rings in Sunshine • Increased coordination with local government along the Dandenong Creek 'Living Links' corridor • 167 ha of revegetation • 572 ha of weed control, 1,080 ha of pest animal control • 31 management agreements in place • 8,826 participants in field days, meetings, training events and workshops • 165 partnerships
Our Catchments, Our Communities investment	\$1.6 million
Leverage	\$12,103,962 investment / in-kind contributions

North East CMA

Project	<p>15. Keeping Productive Landscapes Resilient in the Lower Ovens</p> <p>16. Building Resilient Environmental and Social Networks in the Upper Mitta Mitta</p>
Benefits & Outcomes	<p>Integrated catchment management in two key catchments to connect people to their environments and build landscape resilience. Protection and improved condition of vegetation corridors and wetlands, better connecting the Lower Ovens River to the Chiltern-Mt. Pilot and the Warby-Ovens National Parks.</p> <p>Community partnerships improving in-stream and riparian habitats along the Mitta Mitta River, supporting better catchment health.</p>
Key achievements	<ul style="list-style-type: none"> • Strengthened coordination between key catchment partners • Catchment Action Plans developed for the Upper Mitta Mitta and the Lower Ovens landscapes • 30 ha of revegetation • 826 ha weed control, 408 ha pest animal control • 25 management agreement in place • Effective community engagement with 3,861 participants in events • 69 partnership established
Our Catchments, Our Communities investment	\$1.6 million
Leverage	\$557,839 in-kind contributions



West Gippsland CMA

Project	17. Protecting Our Ponds
Benefits & Outcomes	Restoration and protection of a unique chain of ponds in the Perry River catchment, including 300-400 on the HVP forestry estate. Innovative partnerships with HVP for changed protocols, management practices, and a new approach to covenanting with Trust for Nature to protect and manage the pond system.
Key achievements	<ul style="list-style-type: none"> • A 20-year plan to protect and manage the ponds on the HVP estate • 20 priority erosion sites remediated • Formal protection of 59.1 ha • 18 management agreements in place. • Inventory/assessment of over 1,000 ponds • Conservation covenants in progress – HVP Plantations and private land • 4 cultural heritage assessments • On Country visits in the Perry River catchment • Community workshops/field trips • 18 km fencing, 41 ha revegetation, 3394 ha weed control • 46 ha pest animal control, 105 ha grazing regime change, 1 km earthworks • Engaged 379 people in field days, meetings and workshops
Our Catchments, Our Communities investment	\$1.6 million
Leverage	\$355,373 investment / in-kind

East Gippsland CMA

Project	18. Implementing the Regional Catchment Strategy on the Red Gum Plains 19. Implementing the Regional Catchment Strategy in the Tambo Valley
Benefits & Outcomes	Red Gum Plains wetlands are being improved delivering community waterways, agriculture and recreation priorities. Increasing landowners awareness of Aboriginal cultural values with heritage sites identified and protected. Gunaikurnai Traditional Owners are engaged in works that support their connection to Country and benefit riparian corridors and wetlands. Landowners actively involved in rehabilitating and enhancing reaches of the Tambo River.
Key achievements	<ul style="list-style-type: none"> • Cultural heritage sites identified and protected on private land • 22 km fencing • 68 ha of revegetation • 383 ha weed control • 13 management agreements in place • 1,777 participants in field or training days, workshops and meetings
Our Catchments, Our Communities investment	\$1.6 million
Leverage	\$176,500
Our Catchments, Our Communities investment total (for 19 on-ground projects)	\$16 million
Leverage total	\$20,081,554

**Department of Environment, Land,
Water and Planning**

Integrated Catchment Management
in Victoria

www.delwp.vic.gov.au

Authorised and published by the Victorian
Government, 1 Treasury Place, Melbourne

ISBN 978-1-76105-014-5 (Print)

ISBN 978-1-76105-015-2 (Online)

Accessibility

If you would like to receive this publication in an alternative format, please telephone the DELWP Customer Service Centre on 136 186, email customer.service@delwp.vic.gov.au or via the National Relay Service on 133 677 www.relayservice.com.au.

This document is also available on the internet at www.delwp.vic.gov.au.



© The State of Victoria Department of Environment, Land, Water and Planning 2021. This work is licenced under a Creative Commons Attribution 4.0 International licence. To view a copy of this licence, visit <http://creativecommons.org/licence/by/4.0/>.